



Installation Guide



DESKTOP BASED GEOGRAPHICAL MANAGEMENT INFORMATION SYSTEM (GMIS 2018)

Table of Contents

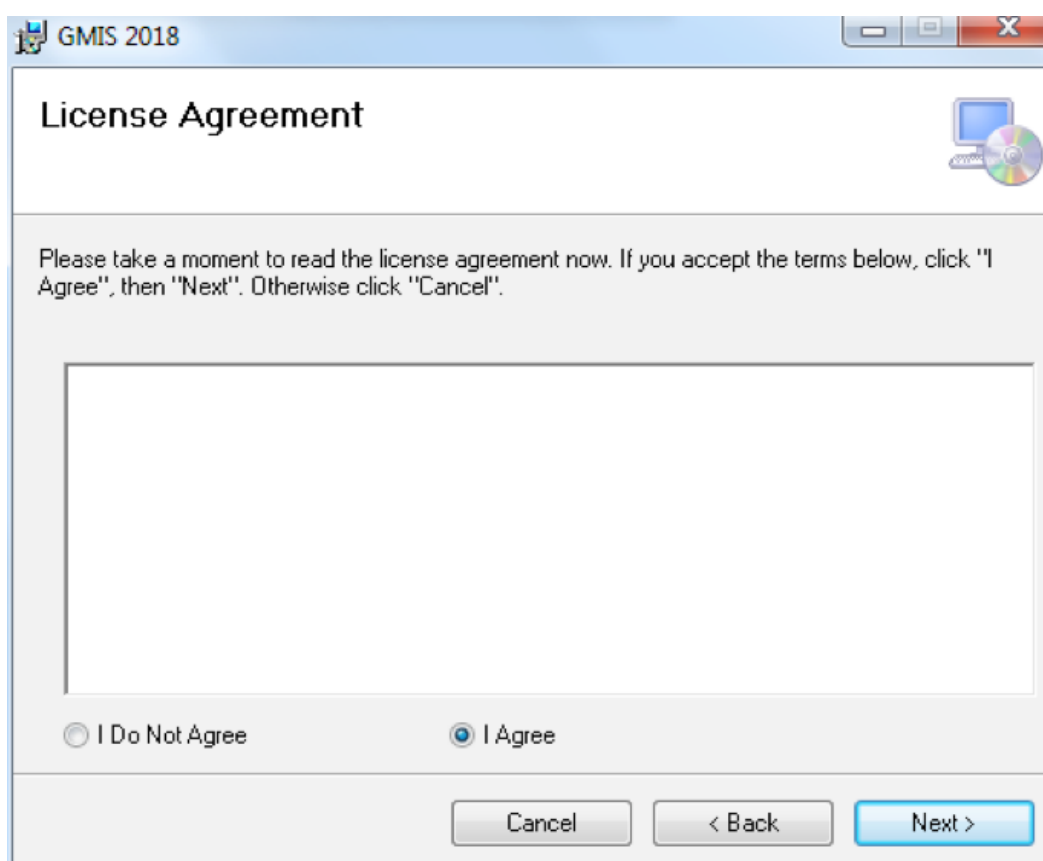
Section 1: Installation of Desktop GMIS application	1
Section 2: Database Setup and Installation.....	6
A. Installation of database (SQL server 2014 express edition)	6
B. Database Creation.....	12
C. Installation of Crystal Report	17

Section 1: Installation of Desktop GMIS application

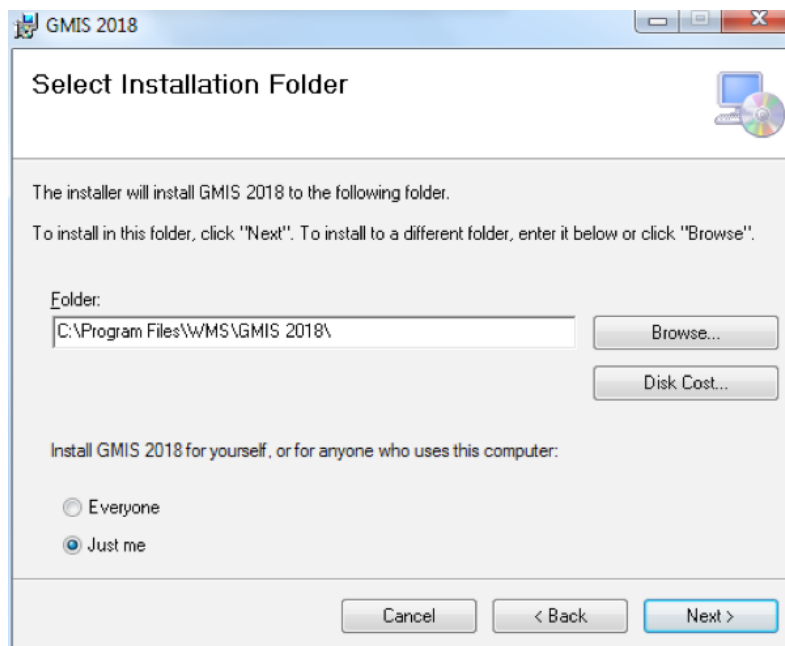
1. Double click setup.exe file in GMIS 2018 installation folder

Name	Date modified	Type	Size
 GMIS2018	3/25/2018 9:53 PM	Windows Installer ...	31,328 KB
 setup	3/25/2018 9:52 PM	Application	773 KB

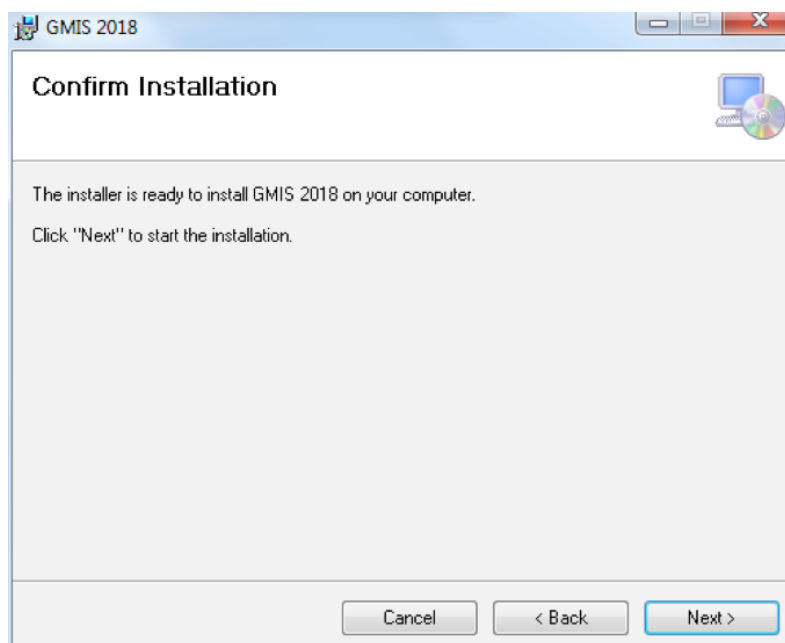
2. Click Next in subsequent pages



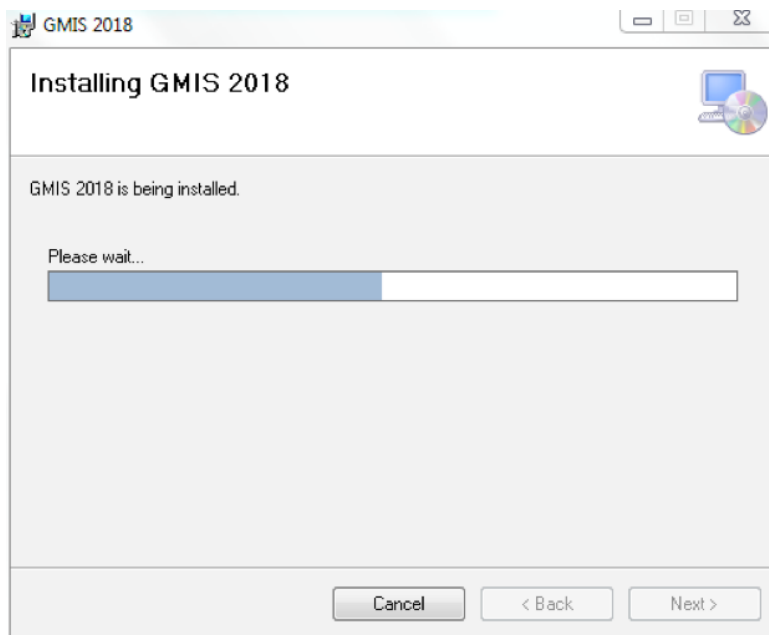
3. Select '**I agree**' and Click **Next**.



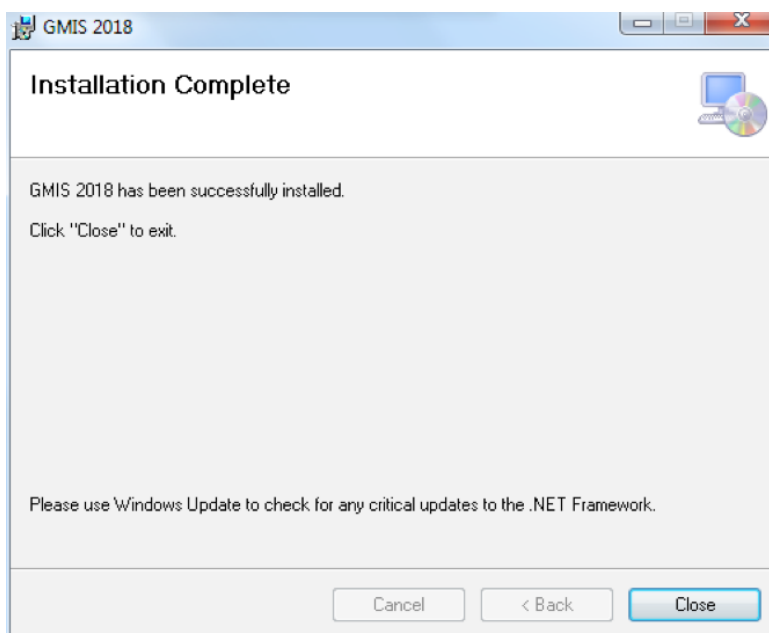
4. Click **Next**



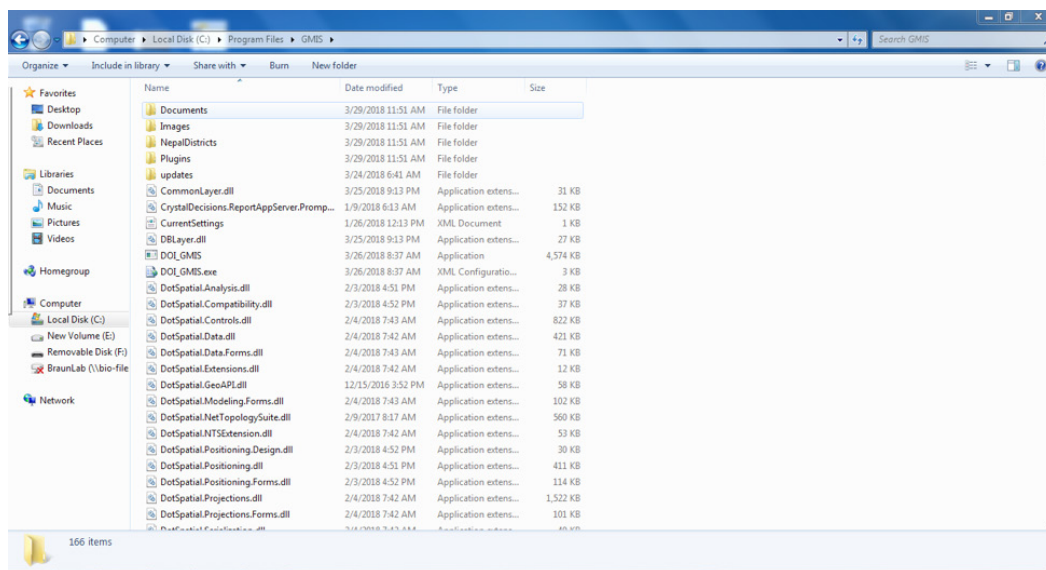
5. Please wait for a while, as installation may take some time. When installation is successfully complete, the following screen appears



6. Click **Close**.



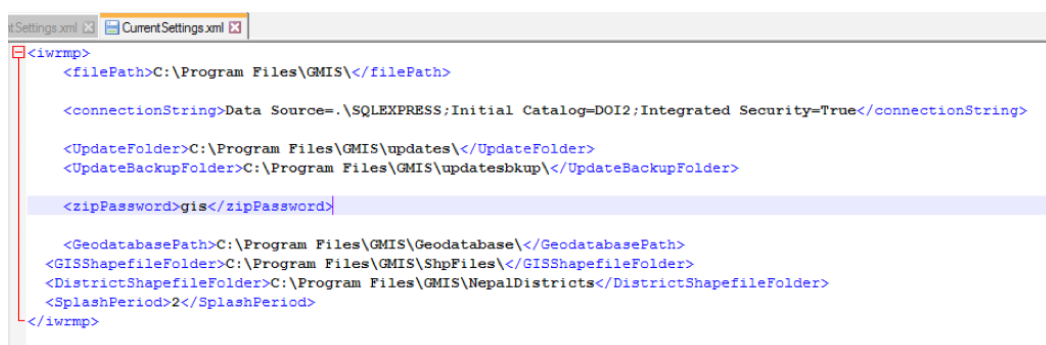
7. Go to Program Files where GMIS is installed and verify following screen .



If there is no “Documents” Folder in Program Files create one .
(Only for 64 bit systems) . Otherwise its already created .

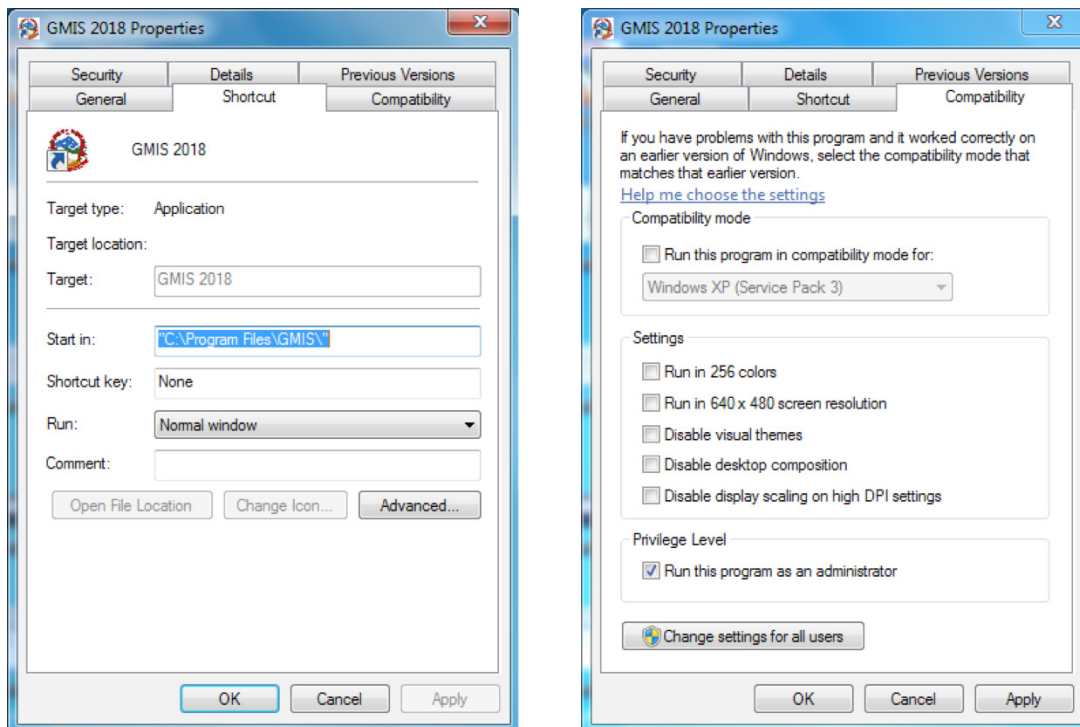
Note : ‘ Documents ‘ Folder must be present in Program Files
not inside Program Files (x86) Folder .

Configuration of ‘ CurrentSettings’ File should be as follows .



Verify the installation path for the program and the connection string . It may vary according to installation path . For 64 bit system it may be under Program Files (x86) Folder .

After installation be sure to choose “**Run as administrator**” as shown below . Click GMIS icon and change its properties as shown below .

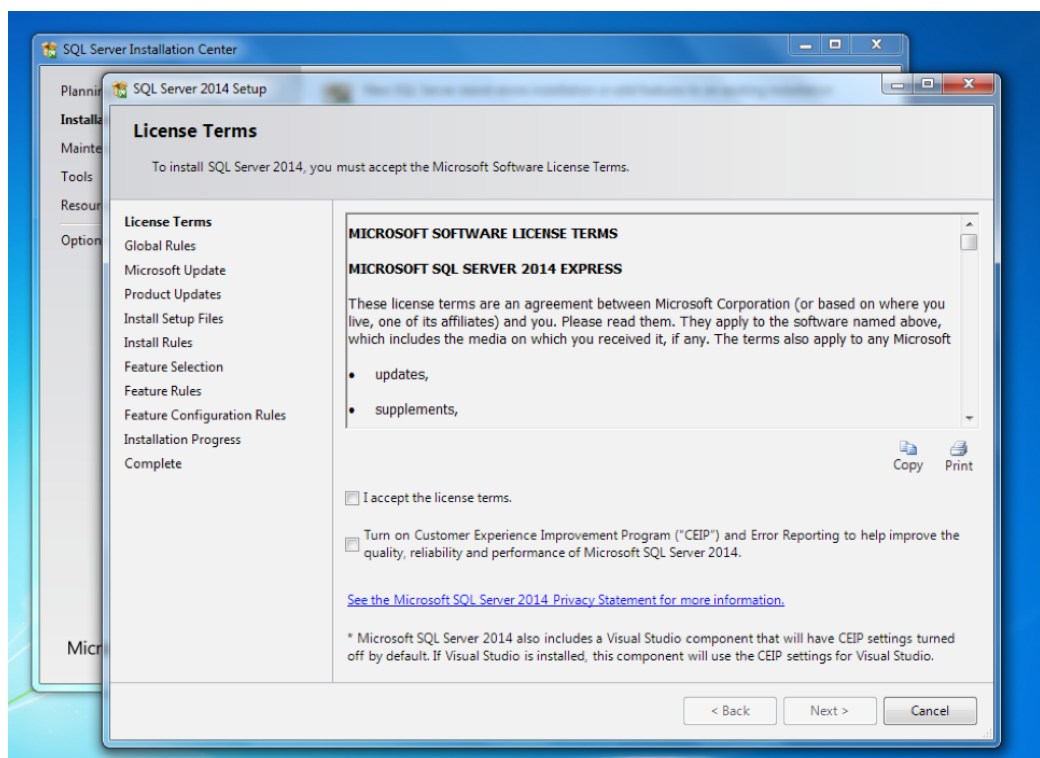
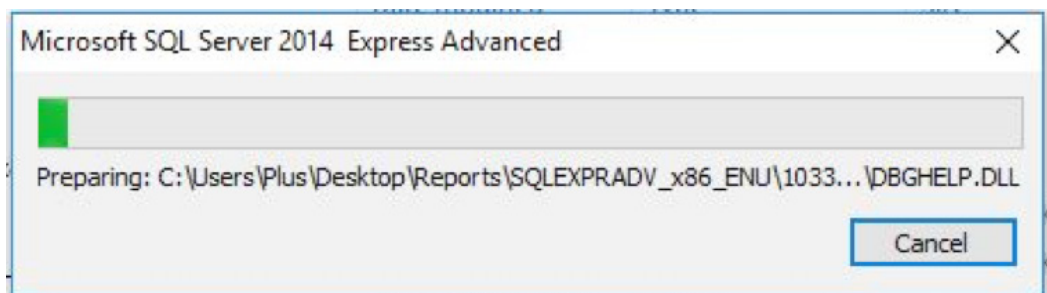


Click **Apply**.

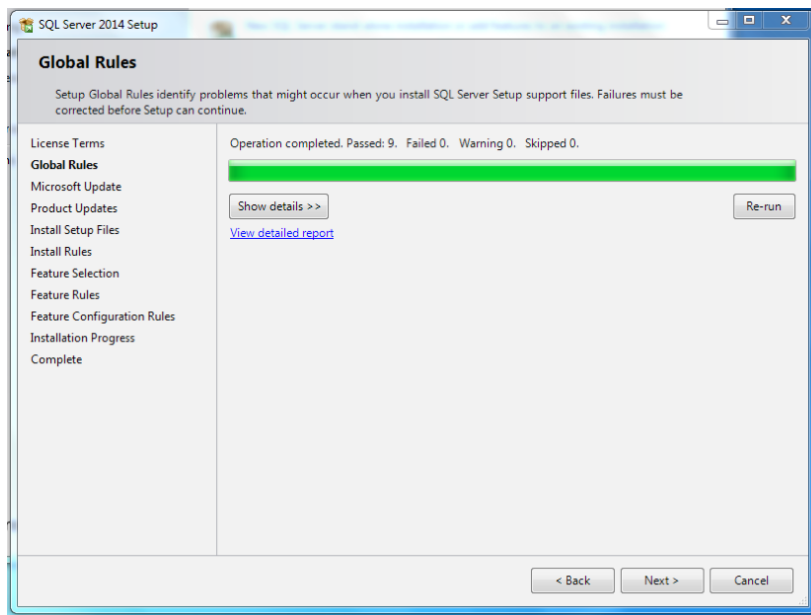
Section 2: Database Setup and Installation

A. Installation of database (SQL server 2014 express edition)

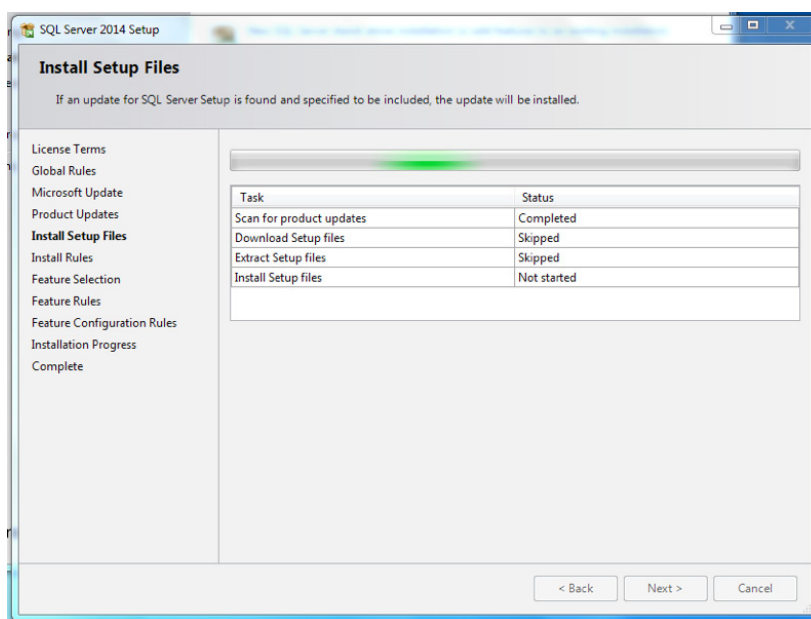
1. Double click SQLEXPADV_x86_ENU.EXE file from the installation folder



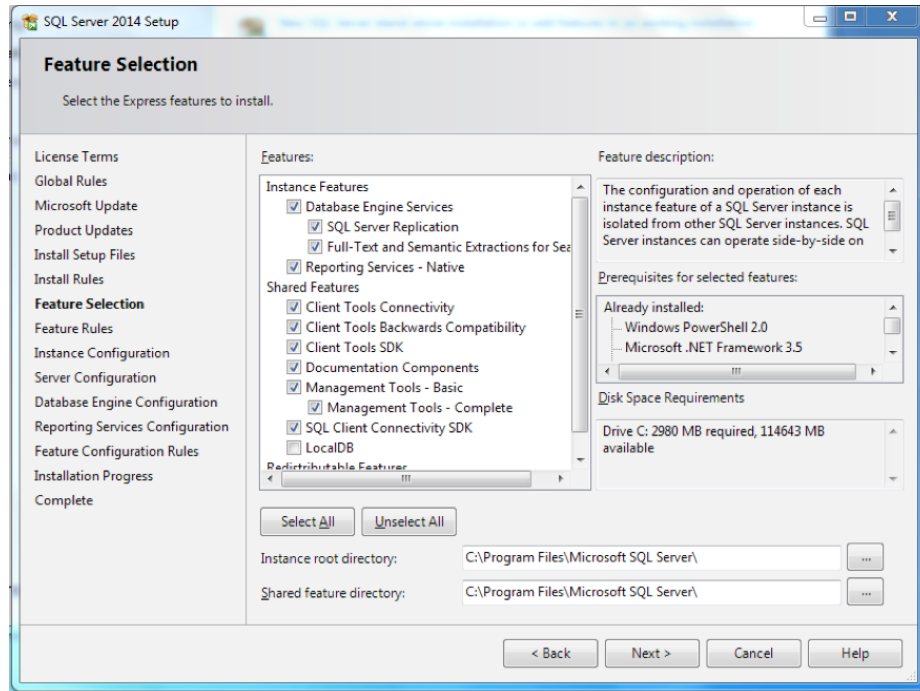
2. Check “I accept the licensing terms and conditions”. Then click **Next**.



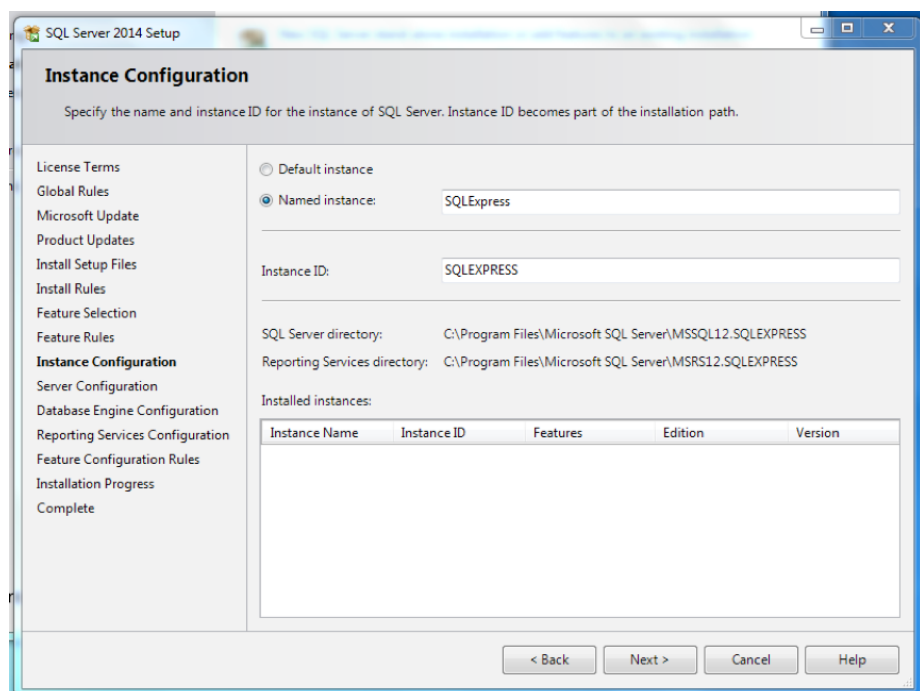
3. This may take some time.



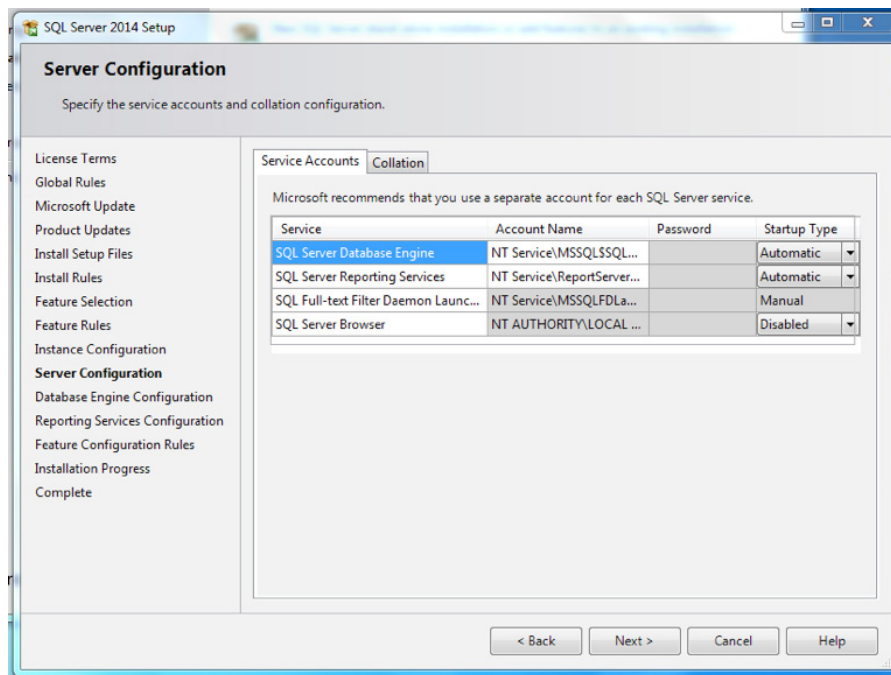
4. Click Next.



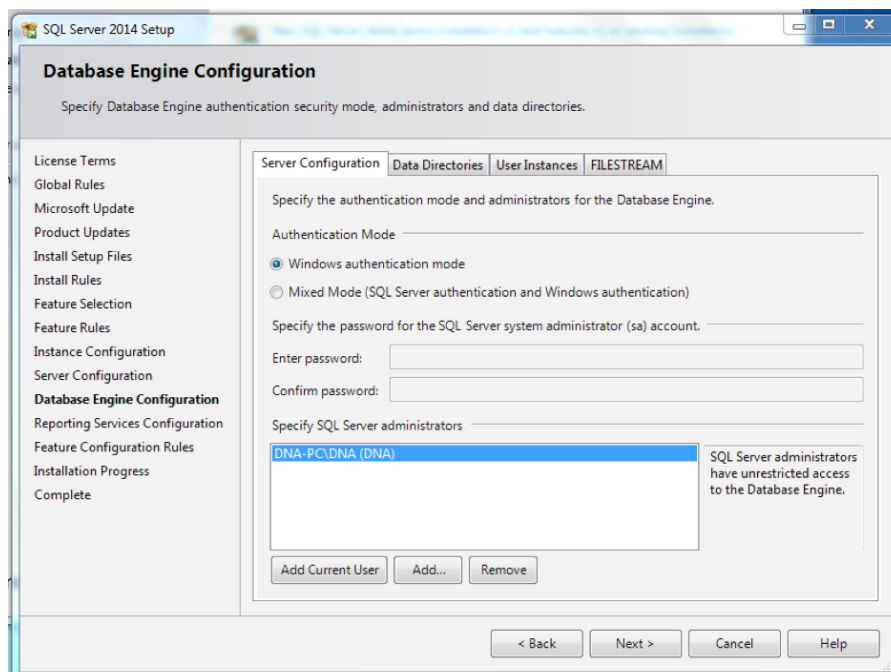
5. Click Next.



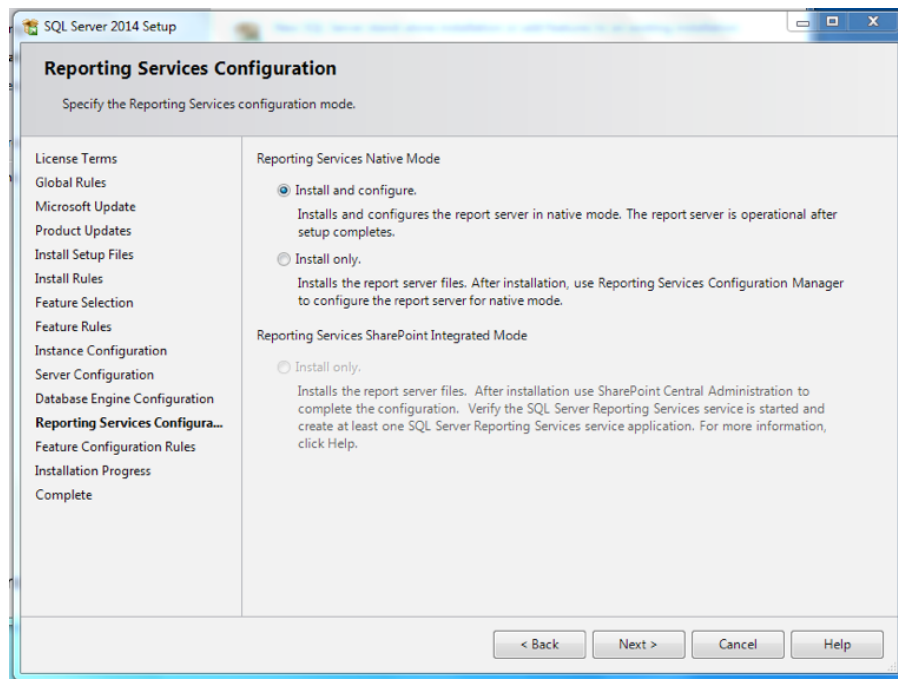
6. Check Named instance and confirm its SQLEXPRESS.



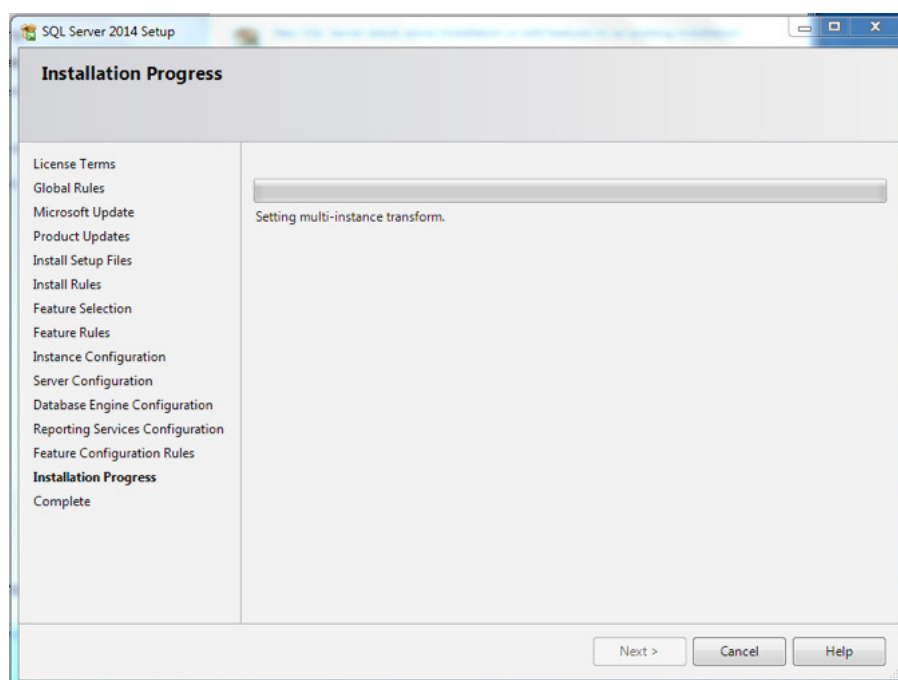
7. Click Next.



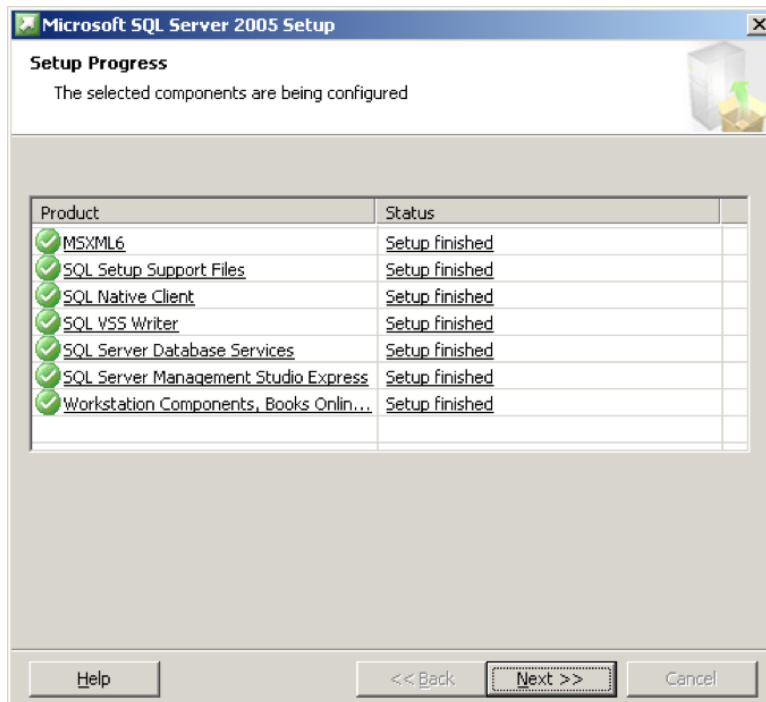
8. Make sure windows Authentication mode is selected. Click **Next**.



9. Make sure install and configure is selected then click **Next**.



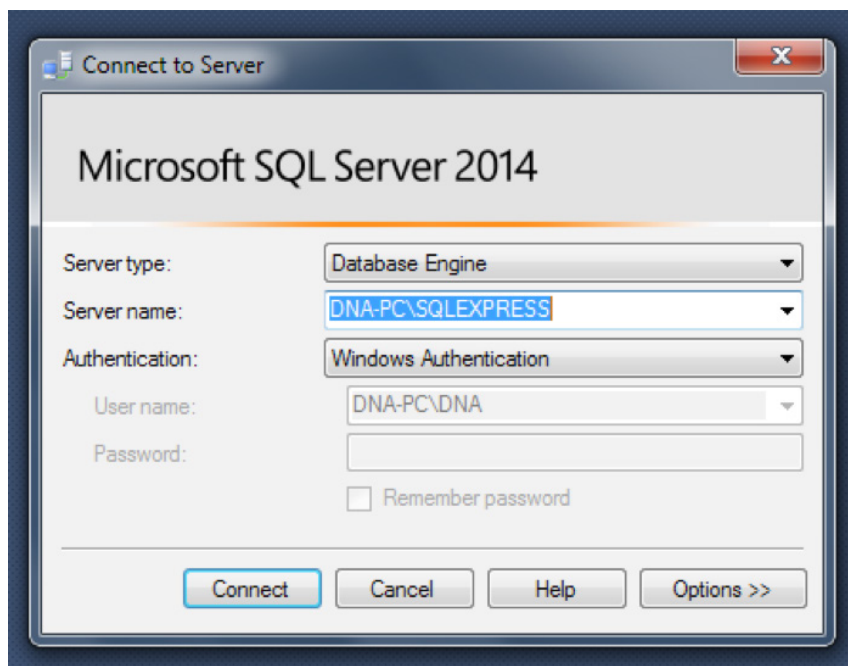
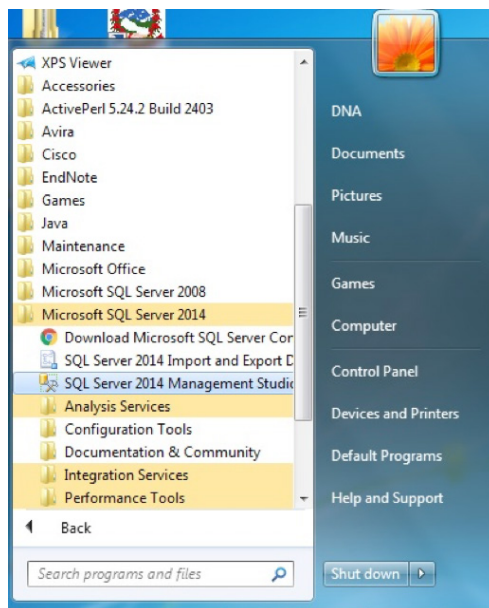
10. Wait until complete and click Finish after install . This step may take a long time .



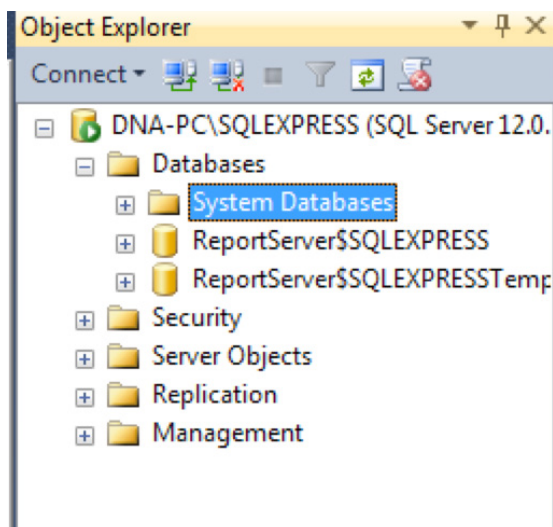
11. Click **Finish**.

B. Database Creation

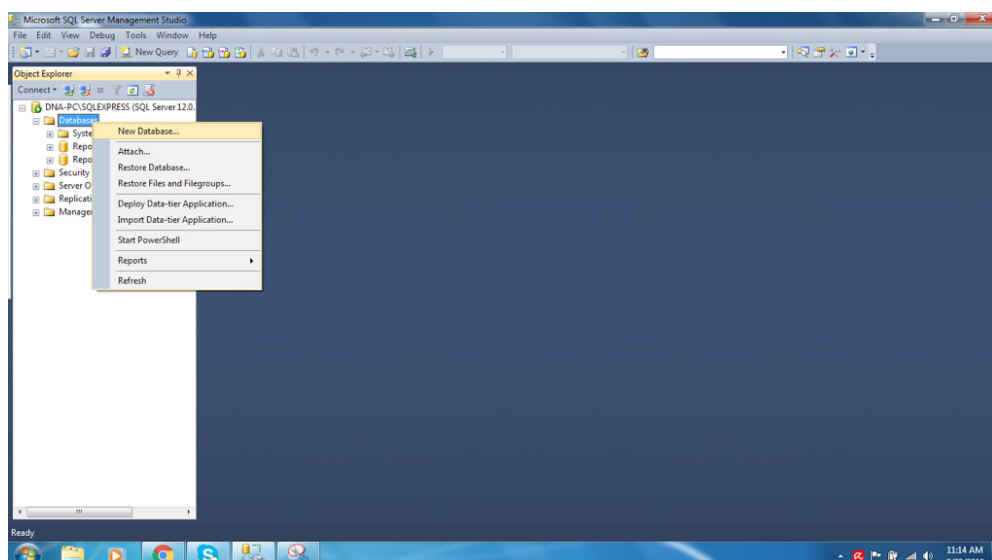
1. Go to “Start” menu. Select Programs >> Microsoft SQL Server 2014 >> SQL Server Management Studio Express.



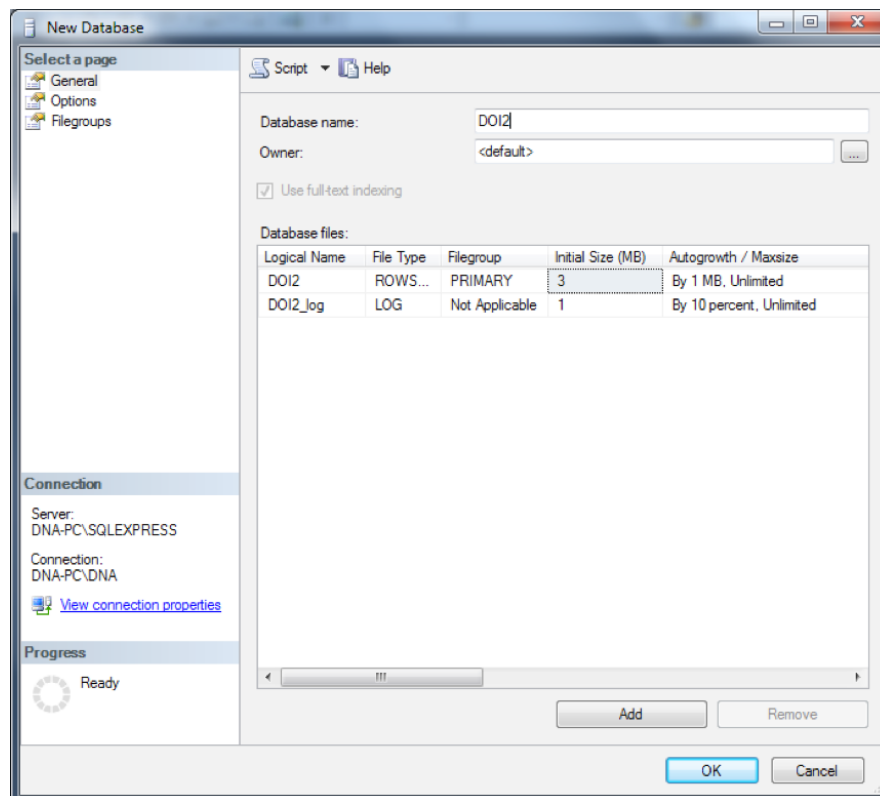
2. Select “Database Engine” for Server type. Select “<ComputerName>\SQLEXPRESS” as Server name. <ComputerName> is the name of your computer. Choose Windows Authentication.



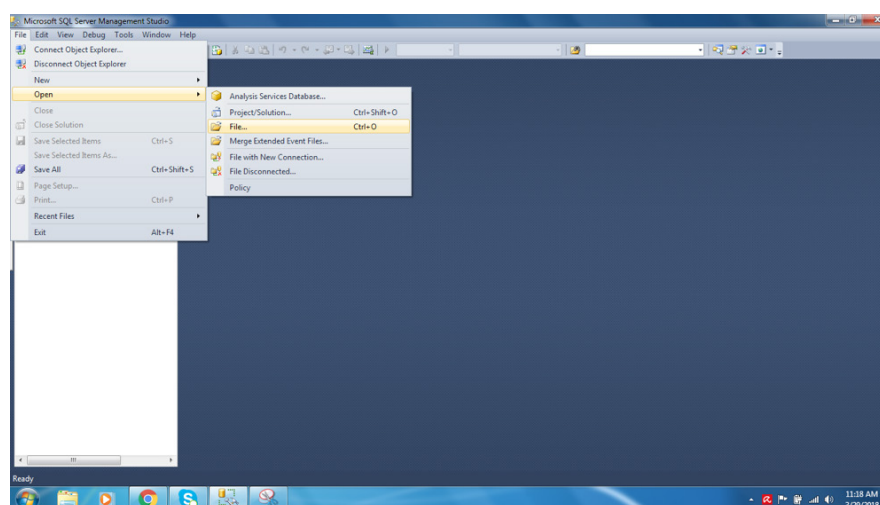
3. In left pane, right click “Databases”. Select “New Database”.

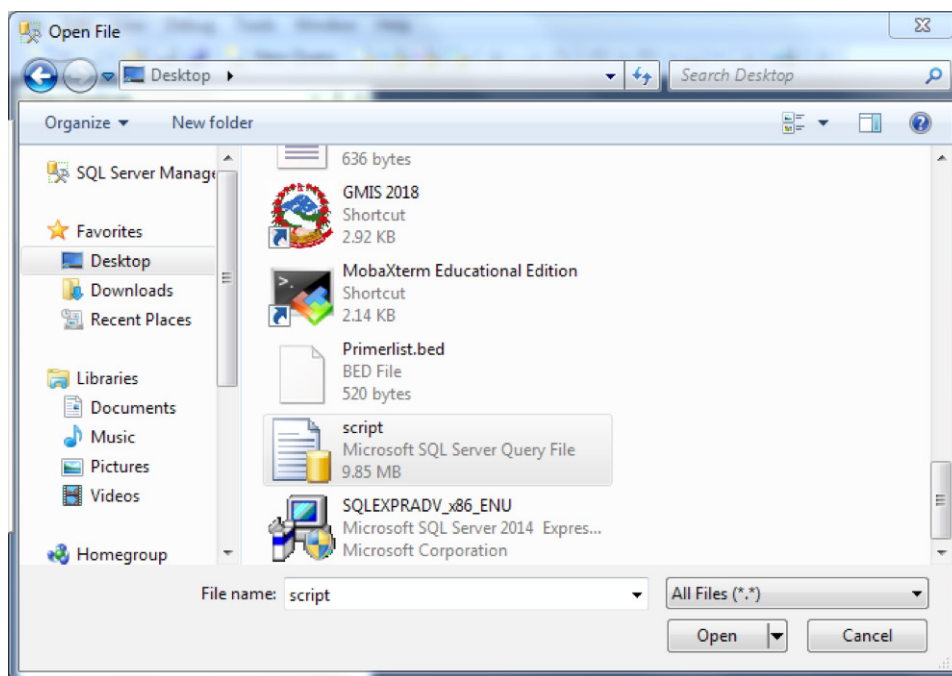


4. Enter “DOI2” as Database name in right pane. Click OK. A new database is created, as seen in left pane.

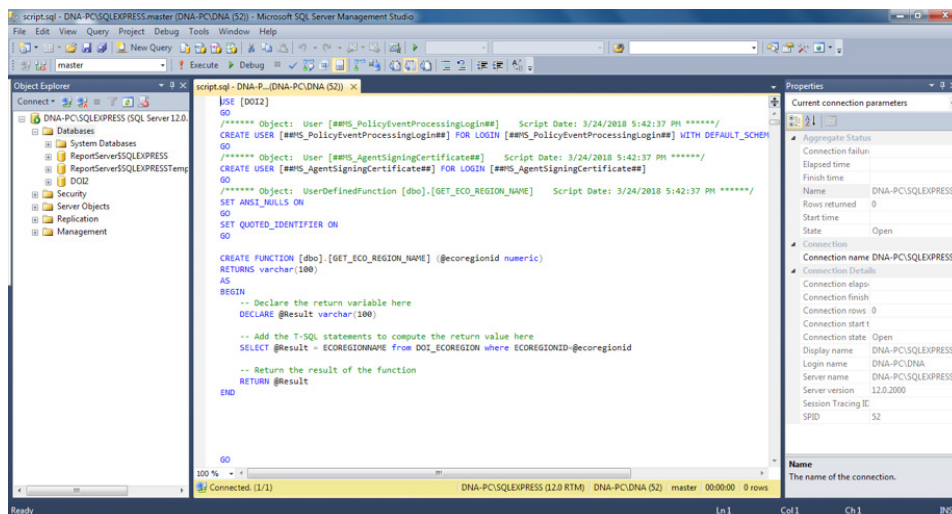


5. Right click “File”. Select Open >> File

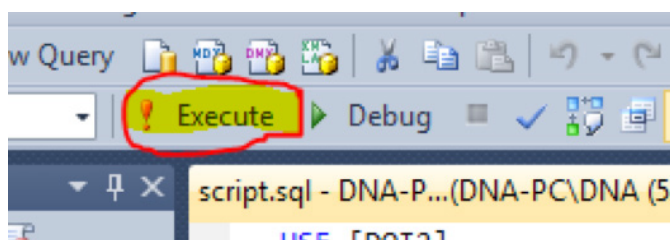




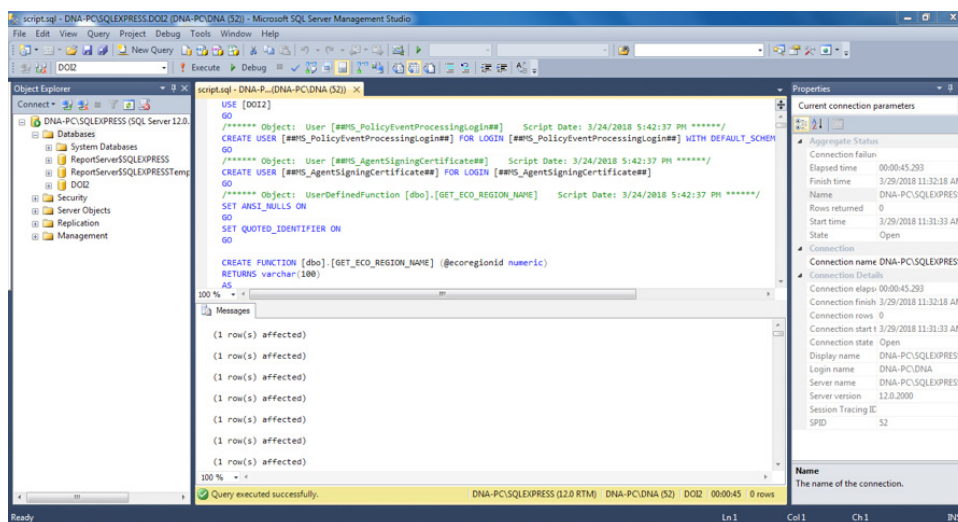
6. Select “Script.sql”. Click Open Button.



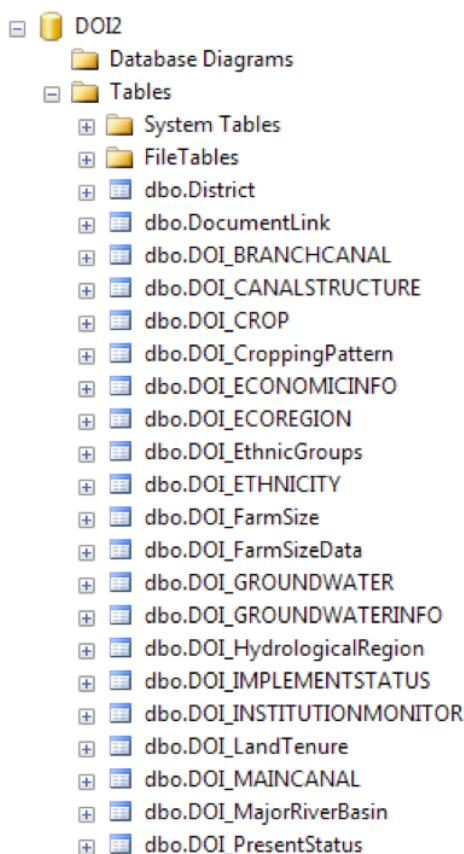
7. Click “Execute” as shown below .



8. Verify if query was executed successfully .

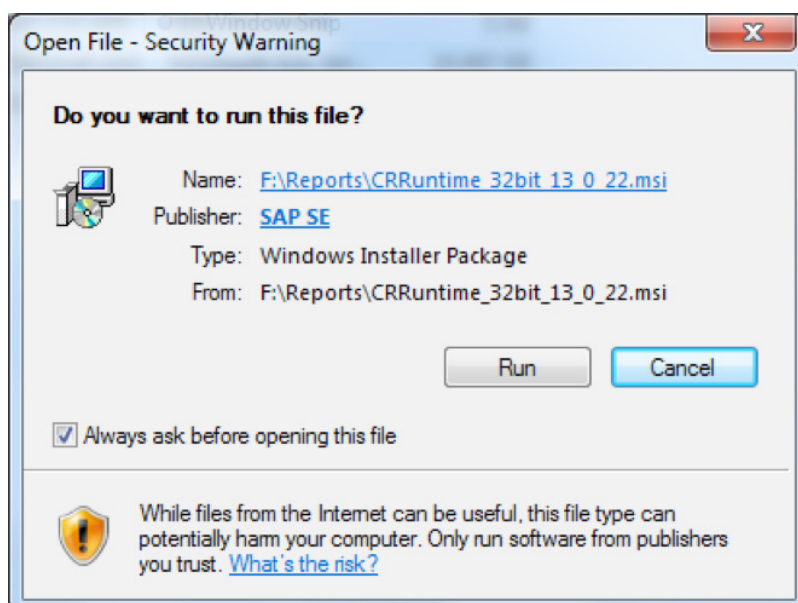


9. Select Database and expand to see if tables are created .

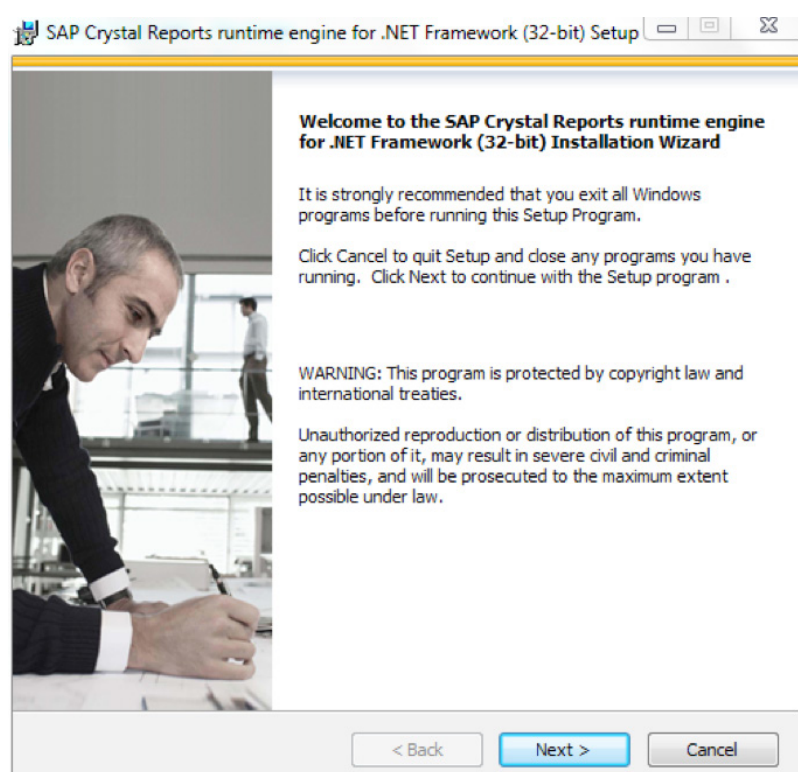


C. Installation of Crystal Report

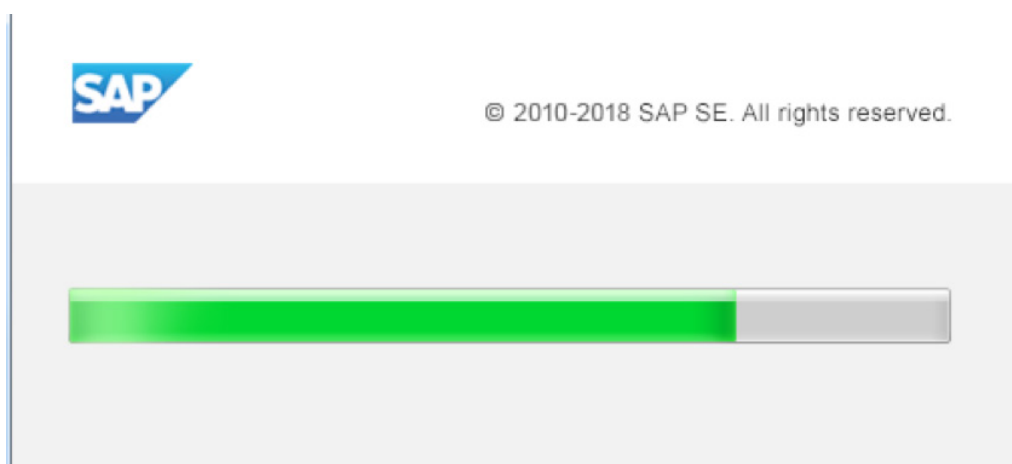
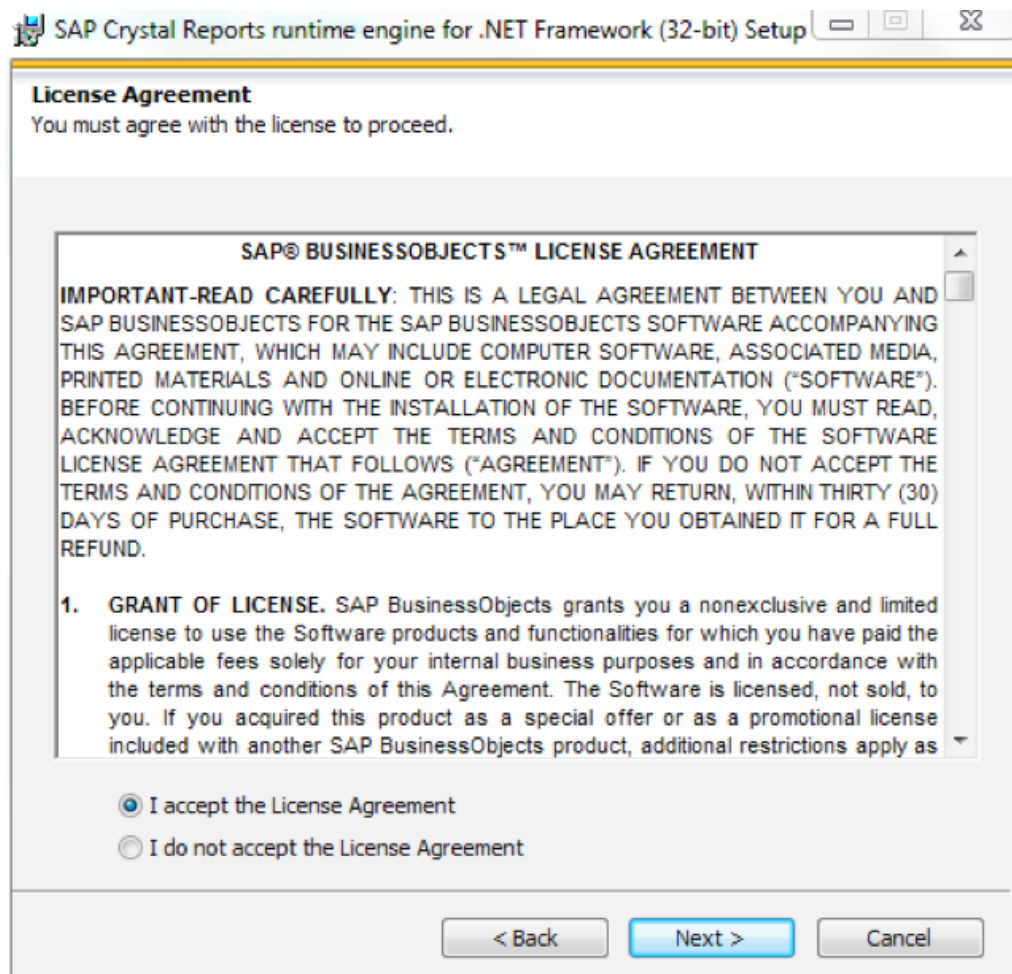
1. Click CRRuntime_32bit_13.0.22.msi file provided in setup folder .Click **Run**



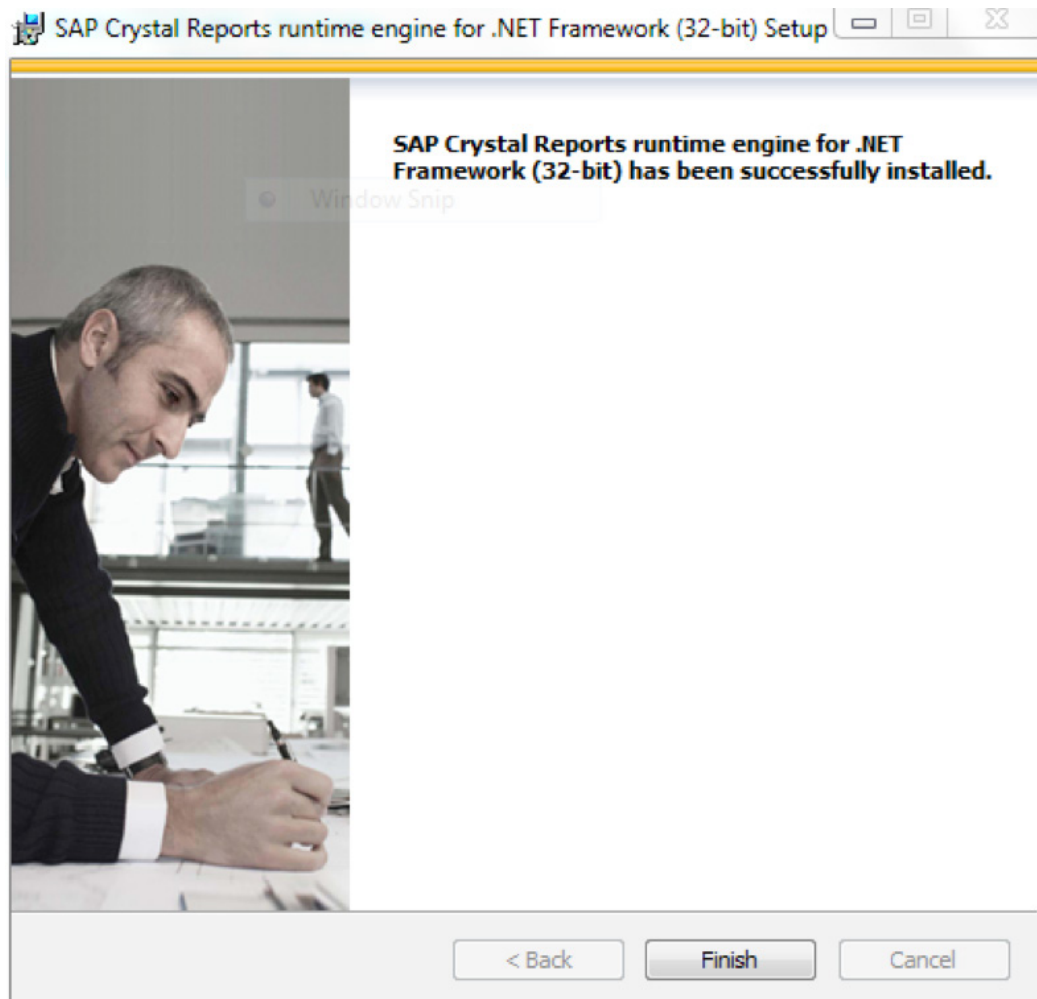
2. Click Next.



3. Select “I accept the License Agreement ” and click **Next**. Then click **Next** in next page .



4. Click Finish to complete installation .



Installation Guide

DESKTOP BASED GEOGRAPHICAL MANAGEMENT INFORMATION SYSTEM (GMIS 2018)

Prepared by

Water Modeling Solutions Pvt. Ltd.

Gwarko-8, Lalitpur, Nepal

Tel: 01-6214408

Email: info@wms.com.np

Url: www.wms.com.np

